

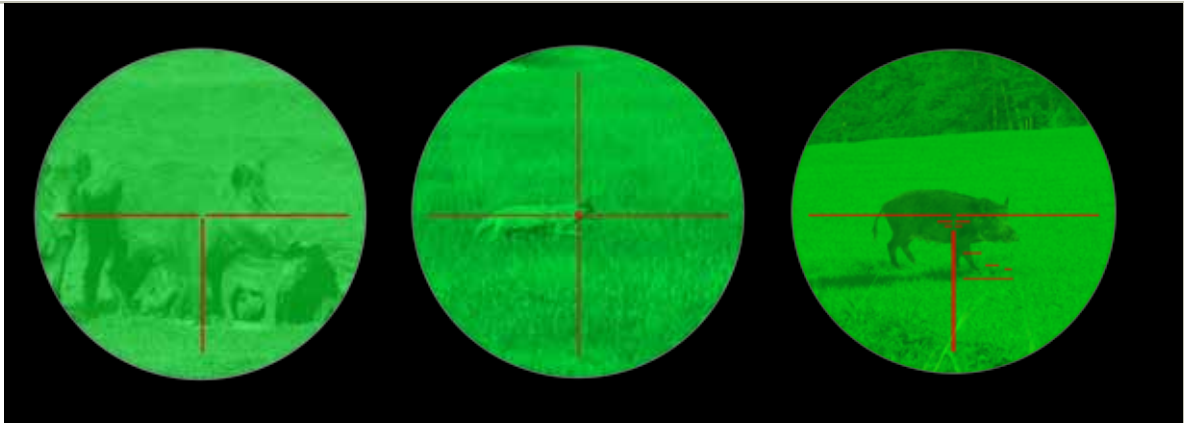
Stand-alone Night Vision Optic, ballistic Reticle, Tactical

# SNORT™



The New NITEHOG SNORT™ is the First True Night Vision Rifle Scope for Tactical Hog and Varmint Control - *Purpose-Built By Hunters for Hunters*

**S**erious  
**N**ight Vision  
**O**ptic for  
**R**eally Mean  
**T**argets



- ⊕ For Hunting Hogs and other Varmints at Day or Night
- ⊕ True Military-Grade Night Vision with Multiple Reticle Options
- ⊕ US-Manufactured Night Vision Technology†
- ⊕ Night Vision Scope with Reticle for Hunting Predators at Night

† Dependent upon image intensifier tube model.

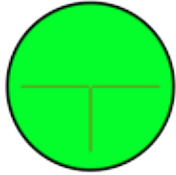
877 - NITEHOG (648-3464)  
Sales@NITEHOG.com

## www.NITEHOG.com



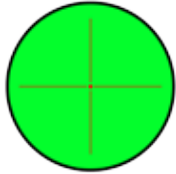
NITEHOG

### Available SNORT Reticles



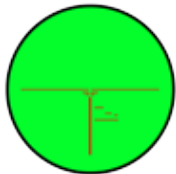
**Type 1: T Reticle**

Long horizontal lines for precise aiming with 1.3 MOA center notch (4cm at 100m)



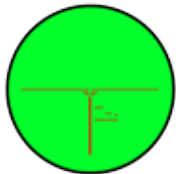
**Type 2: Cross-Dot Reticle**

Long horizontal lines for precise aiming with 1.3 MOA center notch (4cm at 100m)



**Type 3: Pro556 Reticle**

Enhanced T-Reticle with ballistic compensation and distance measurement marks calibrated for 5.56x45 caliber rifles



**Type 3: Pro762 Reticle**

Enhanced T-Reticle with ballistic compensation and distance measurement marks calibrated for 7.62x51 caliber rifles



### SNORT FACTS

PERFORMANCE	3X Magnification with Adjustable Objective Focus	PERFORMANCE
	13.6° Field of View	
	300yd to 800yd (300m to 700m) Effective Range <sup>†</sup>	
OPTICS	21yd to ∞ (20m to ∞) Focusing Range	OPTICS
	1/4 MOA Per Click at 100yd (10mm at 100m)	
	2.25in (57mm) Objective Lens Diameter	
	.25in (6mm) Exit Pupil Diameter	
ENVIRON	2.5in (60mm) Eye Relief	ENVIRON
	+/- 2.5 Diopter Adjustment	
	-49F to +122F (-45C to +50C) Operating Temp	
BATTERY	-76F to +140F (-60C to +60C) Storage Temp	BATTERY
	Waterproof to 66ft (2atm, 20m)	
	AQAP Std # Compliant Dust, Sand, Humidity Resistance	
BATTERY	Single AA Battery	BATTERY
	≥60 hrs Lithium (≥40 hrs Alkaline) Battery Life	
	Blinking Reticle Low Battery Indicator	

### SNORT FEATURES

- True Night Vision Weapon Scope with Military Grade Image Intensifier Technology ⚙️
- Illuminated Reticle Glass-Etched in First Focal Plane ⚙️
- 3x Magnification with Coated Optics for Best Image Quality ⚙️
- Daylight Filter which Enables Day/Night Capability ⚙️
- Picatinny Mounting Rail (MIL-STD-1913) for Lasers, Lights and Other Accessories ⚙️
- Ruggedized Metal Construction for Waterproofing, Dustproofing and Shockproofing ⚙️
- Protected Reticle Turrets with True Elevation and Windage Adjustments ⚙️
- Quick-Detach Mount for Use on MIL-STD-1913 Picatinny Rails ⚙️
- Multiple Night Vision Options (Gen II, Gen II+ or US-Manufactured Gen III) ⚙️
- Extensive Weapons Compatibility Including 5.56, 7.62, .300 WinMag and Others ⚙️
- One Year Warranty Standard which Includes Image Tube and Optics ⚙️

<sup>†</sup> Effective range dependent upon image intensifier tube model.

www.NITEHOG.com  
877 - NITEHOG (648-3464)  
Sales@NITEHOG.com



NITEHOG